

A level English

English Literature



Listen to this show on Mary Shelley and Frankenstein and make notes on her life and the key features of the Gothic.

www.bbc.co.uk/sounds/play/m00051n6



Read 'The Tell Tale Heart' by Edgar Allan Poe and identify the themes, then analyse how suspense is created within the story.

https://americanenglish.state.gov/files/ae/resource_files/the_tell-tale_heart_0.pdf



Watch this Ted Talk about 'Why Shakespeare?'

www.youtube.com/watch?v=khVubNlgS0o



English Language



Enrol on the Open University and work through 'Exploring the English Language' to acquaint yourself with the core word classes.

www.open.edu/openlearn/history-the-arts/culture/english-language/exploring-the-english-language/content-section-0?active-tab=description-tab



Make notes on how language has changed over the last 1000 years to become the English we now use.

www.oxfordinternationalenglish.com/a-brief-history-of-the-english-language/



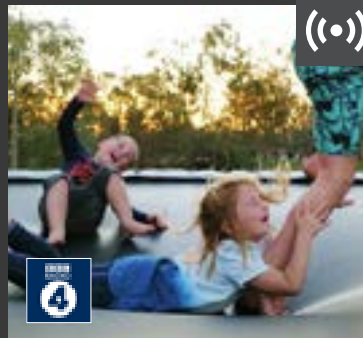
Watch the fourth episode of Babies on Netflix entitled: 'First Words'



A level Mathematics



Solve one or more problems of your choice from the nrich website:
<https://nrich.maths.org/14552>



Listen to the BBC radio programme More or Less:
www.bbc.co.uk/programmes/m000htw2



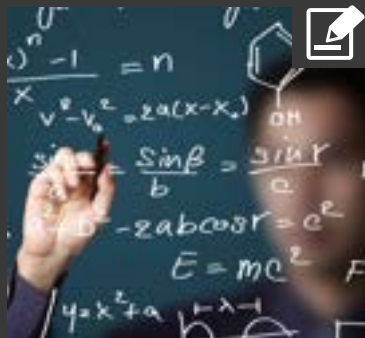
Watch This Ted Talk about statistics and global health by Hans Rosling:
www.ted.com/talks/hans_rosling_the_best_stats_you_ve_ever_seen?language=en#t-804362



Read this article from Underground Maths about the concept of Invariance:
<https://undergroundmathematics.org/pervasive-ideas/invariance/download/invariance.pdf>



Watch The BBC Horizon documentary on the proving of Fermat's Last Theorem
www.bbc.co.uk/iplayer/episode/b0074rxx/horizon-19951996-fermats-last-theorem



Choose one of the nrich problems that you solved and write up your solution in detail.
 You could include further extensions of the problem that might be worth exploring.
 Email your solution to me.



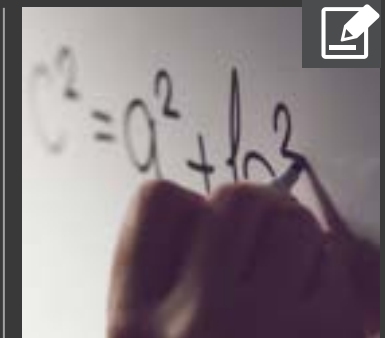
Answer one of the Higher Tier GCSE Past Papers (which are available in the Teams folder).
 Ask me about any questions you do not know how to answer, using Microsoft Teams chat.
 Check your answers using the mark scheme after you have completed the paper.



Explore links between health, economies and inequality using the Gapminder app:
[www.gapminder.org/tools/#\\$chart-type=bubbles](http://www.gapminder.org/tools/#$chart-type=bubbles)
Write up a list of 5 interesting facts that you have discovered and email them to me.



Listen to this BBC radio programme about The Infinite:
www.bbc.co.uk/sounds/play/b07w99dw



Complete the A level maths questionnaire.
 The questionnaire can be found in the folder on Teams.
 Email your completed questionnaire to me.